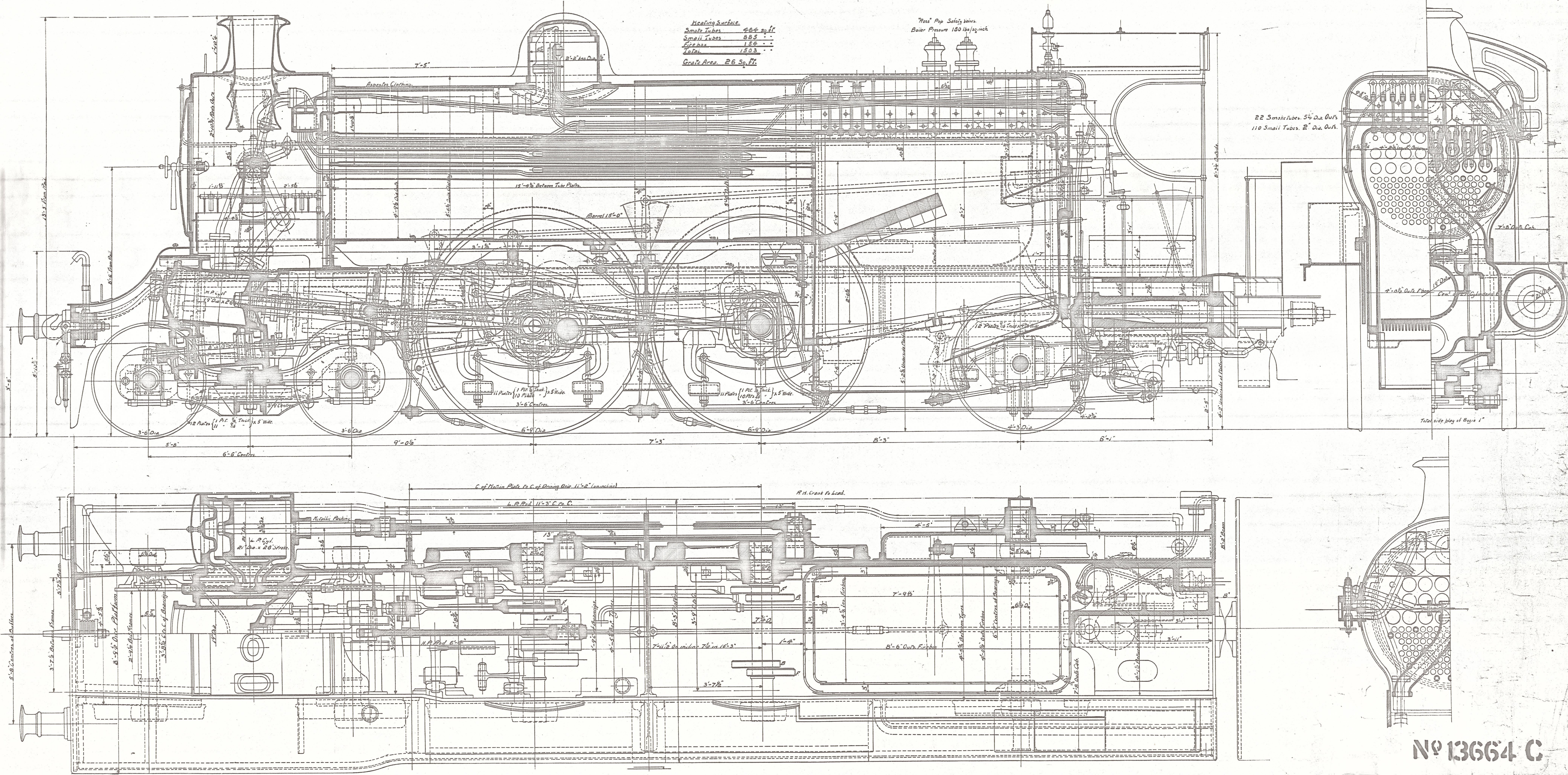


— LONDON & NORTH EASTERN RAILWAY —
— 4-4-2, 3 CYL^R COMPOUND TENDER ENGINES, 8D CLASS. — (C-5 TYPE)

N^o 13664 C
Revised Dec 28th 21.
Drawn N^o 714
9



Heating Surface

Smoke Tubes	264 sq. ft.
Small Tubes	885
Fire box	154
Total	1303

Gross Area 26 Sq. Ft.

Wass' Pop Safety Valve.
Boiler Pressure 180 lbs/sq. inch.

22 Smoke Tubes, 5 1/2" Dia. Out's
110 Small Tubes, 2" Dia. Out's.

N^o 13664 C

SCALE 1 INCH. = 1 FOOT.

1239 2